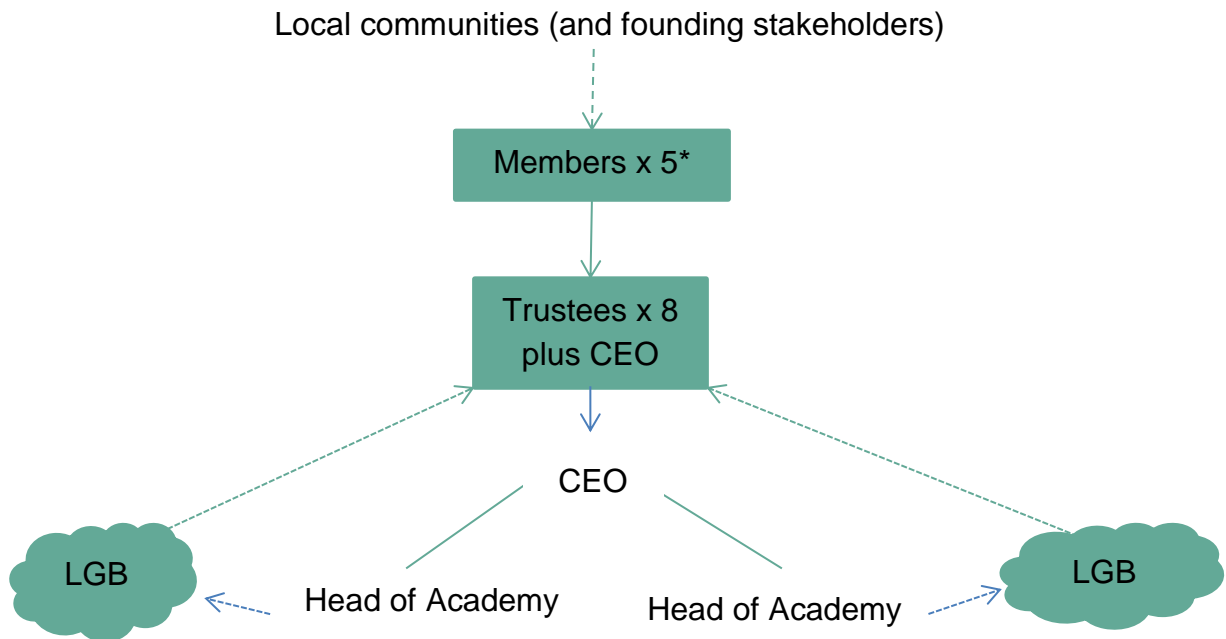


## Eastern Learning Alliance

### Governance Structure



\*Members = Permanent, not fixed term

————— Direct accountability, responsibility for & oversight of

----- Advisory, reporting to & liaison with

|                               | <b>Key Functions</b>  |
|-------------------------------|---|
| Members                       | <ul style="list-style-type: none"> <li>• Appoint Trustees based on competence/skills/needs analysis (by interview and against criteria)</li> <li>• Monitor and assesses progress of the Trust</li> <li>• Meet once a year or as need arises</li> </ul>  |
| Trustees                      | <ul style="list-style-type: none"> <li>• Set and monitor strategy, key objectives, budgets, HR policies, Schemes of Delegation, holds CEO to account</li> <li>• Receives updates from CEO, Heads of Academy and Local Governing Bodies</li> <li>• Meets monthly</li> </ul>  |
| Chief Executive Officer (CEO) | <ul style="list-style-type: none"> <li>• A Trustee but also directly line manages and holds to account the Head of each Academy in the Trust</li> <li>• Receives information, monitors and evaluates and reviews performance enabling Trustees to be informed of progress across each Academy (monthly)</li> <li>• Intervenes as necessary in each Academy</li> </ul> |

|                      |  |
|----------------------|--|
| Heads of Academy     | <ul style="list-style-type: none"> <li>• Devolved responsibility for the running of their Academy with oversight from the CEO</li> <li>• Sits on the Local Governing Body of the Academy</li> <li>• Provides reports and information to the CEO for Trust meetings and to the LGB</li> </ul>             |
| Local Governing Body | <ul style="list-style-type: none"> <li>• Scheme of Delegation delegates responsibility with intention of enabling focus to remain on teaching and learning and the progress and outcomes of learners</li> <li>• Advisory committee role, reporting and liaising with Trustees through the CEO</li> </ul> |
| Local communities    | <ul style="list-style-type: none"> <li>• Membership nominations from the local communities for members to consider if vacancies exist</li> <li>• No other advisory/liaison capacity</li> </ul>   |